

KVM 105-Z70/Cr

Cable gland, brass similar to DIN 89280



Products may differ in size, colour and appearance to those shown. If you require further information or customisation, please contact us directly.



Material cable gland	Brass chromium-plated
Material sealing gasket	EPDM
Material earthing insert	Brass chromium-plated
Temp. range min	-40 °C
Temp. range max	100 °C
Protection class	IP54
Thread type	M
Ø Connection thread D	105
Lead	2
Length screw-in thread L	20 mm
Ø cable diameter min	68 mm
Ø cable diameter max	73 mm
Key width SW	105 mm
Collar diameter (E)	113 mm
Total length TL	88 mm
Install. torques fitting	30 N/m
Install. torques cap nut	30 N/m
Advice	* Similar to DIN 89280
Surface	Chromium-plated
Order no. chrome-plated	10014548
Type	KVM 105-Z70/Cr
Packing unit	1
Tariff number	85369010
EAN number	4007685145480
ETIM-Classification	EC000441

Your Contact:

WISKA UK Ltd.

Unit 7, Hurling Way · St. Columb Major Business Park · TR9 6SX, St. Columb Major, Cornwall · Great Britain

☎ +44-12-08816062 · 📠 +44-12-08816708

info@wiska.co.uk · www.wiska.co.uk

Recommended accessories

GM 105/Cr



10103708

13.12.2024

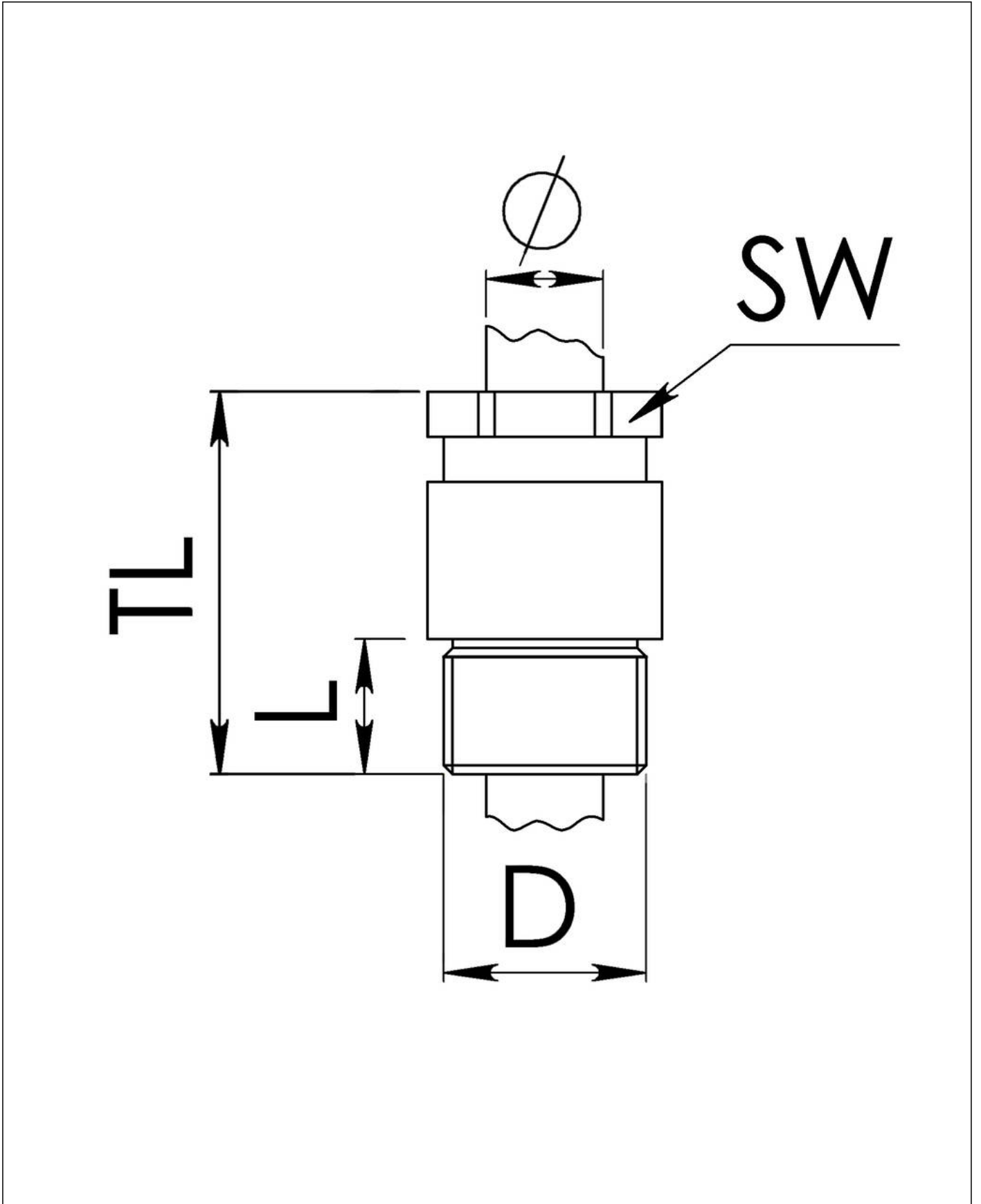
Your Contact:

WISKA UK Ltd.

Unit 7, Hurling Way · St. Columb Major Business Park · TR9 6SX, St. Columb Major, Cornwall · Great Britain

 +44-12-08816062 ·  +44-12-08816708

info@wiska.co.uk · www.wiska.co.uk



Your Contact:

WISKA UK Ltd.

Unit 7, Hurling Way · St. Columb Major Business Park · TR9 6SX, St. Columb Major, Cornwall · Great Britain

☎ +44-12-08816062 · 📠 +44-12-08816708

info@wiska.co.uk · www.wiska.co.uk