

EMT 20 LG

Membrane spout



Products may differ in size, colour and appearance to those shown. If you require further information or customisation, please contact us directly.



| | |
|---------------------------------|-------------------------|
| Material | Thermoplastic elastomer |
| Temp. range min | -40 °C |
| Temp. range max | 80 °C |
| Glow wire test | 750 °C |
| Protection class | IP66 |
| Ø Connection thread D | 20 |
| Length screw-in thread L | 9,5 mm |
| Ø cable diameter min | 1 mm |
| Ø cable diameter max | 15 mm |
| External diameter ED | 25 mm |
| Total length TL | 11 mm |
| Ø Drilling | 20 mm - 21,2 mm |
| Wall thickness S | 2 mm |
| Product Color | RAL 7035 |
| Order no. RAL 7035 | 10062560 |
| Type | EMT 20 LG |
| Packing unit | 100 |
| EAN number | 4007685625609 |
| Tariff number | 39269097 |
| ETIM-Classification | EC000451 |

05.05.2024

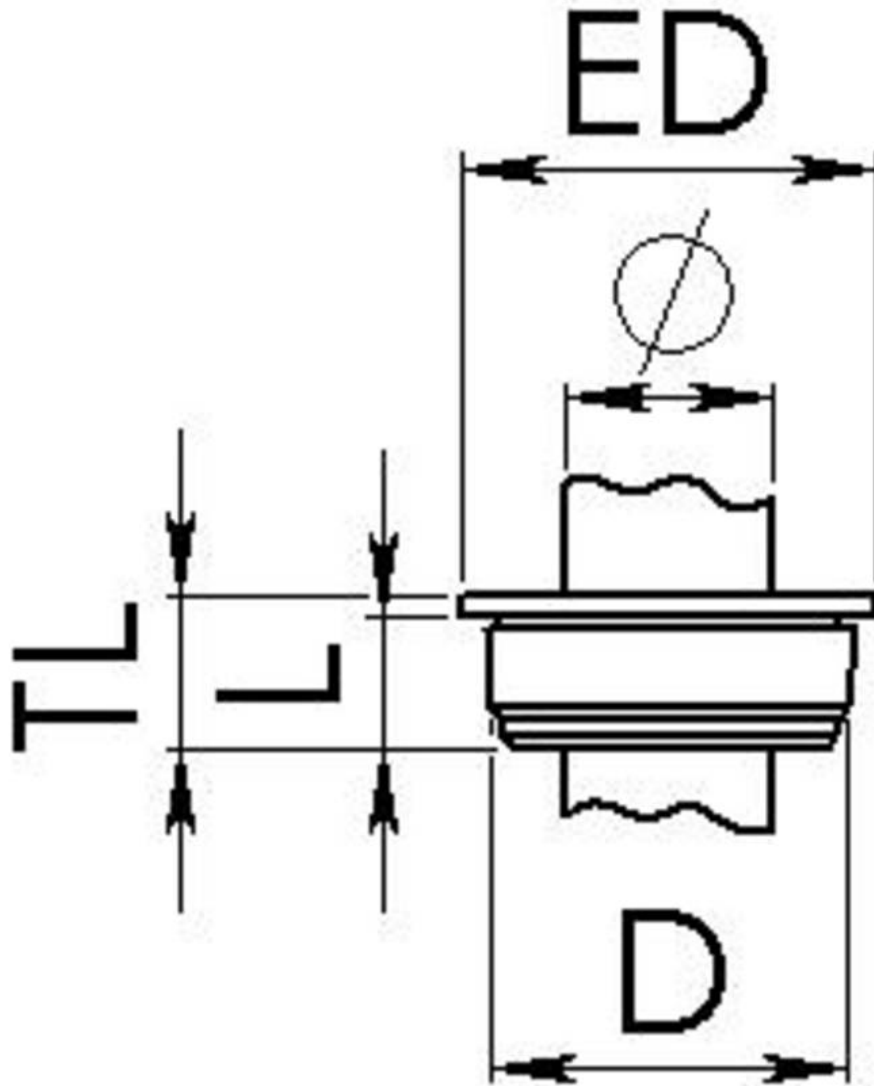
Your Contact:

WISKA UK Ltd.

Unit 7, Hurling Way · St. Columb Major Business Park · TR9 6SX, St. Columb Major, Cornwall · Great Britain

☎ +44-12-08816062 · 📠 +44-12-08816708

info@wiska.co.uk · www.wiska.co.uk



Your Contact:

WISKA UK Ltd.

Unit 7, Hurling Way · St. Columb Major Business Park · TR9 6SX, St. Columb Major, Cornwall · Great Britain

☎ +44-12-08816062 · 📠 +44-12-08816708

info@wiska.co.uk · www.wiska.co.uk