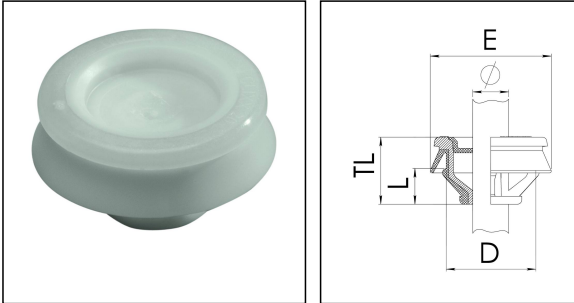


## CLIXX® 20 LG

Membrane cable entrie with strain relief



Products may differ in size, colour and appearance to those shown. If you require further information or customisation, please contact us directly.



<b>Material</b>	Polypropylene
<b>Material membrane</b>	TPE
<b>Temp. range min</b>	-40 °C
<b>Temp. range max</b>	65 °C
<b>Glow wire test</b>	750 °C
<b>Protection class</b>	IP66 / IP67
<b>Ø Connection thread D</b>	20
<b>Length screw-in thread L</b>	7,3 mm
<b>Ø cable diameter min</b>	6 mm
<b>Ø cable diameter max</b>	13 mm
<b>Collar diameter (E)</b>	28 mm - 33 mm
<b>Total length TL</b>	15 mm
<b>Ø Drilling</b>	20,5 mm - 20,7 mm
<b>Wall thickness S</b>	0,8 mm - 3,5 mm
<b>Product Color</b>	RAL 7035
<b>Order no. RAL 7035</b>	10101359
<b>Type</b>	CLIXX® 20 LG
<b>Packing unit</b>	50
<b>EAN number</b>	4007685015806
<b>Tariff number</b>	39269097
<b>ETIM-Classification</b>	EC000451

04.05.2024

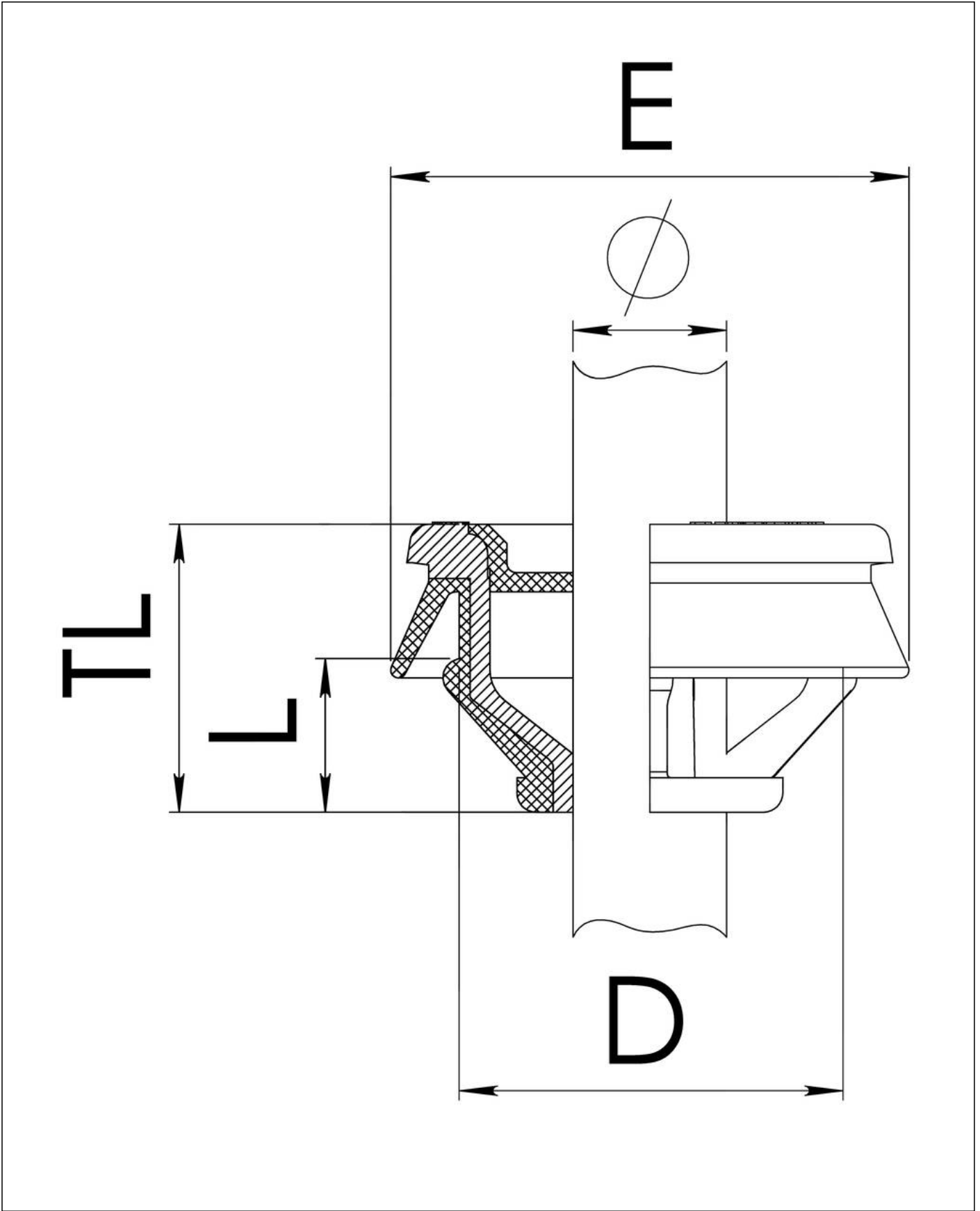
Your Contact:

**WISKA UK Ltd.**

Unit 7, Hurling Way · St. Columb Major Business Park · TR9 6SX, St. Columb Major, Cornwall · Great Britain

☎ +44-12-08816062 · 📠 +44-12-08816708

info@wiska.co.uk · www.wiska.co.uk



Your Contact:  
**WISKA UK Ltd.**  
Unit 7, Hurling Way · St. Columb Major Business Park · TR9 6SX, St. Columb Major, Cornwall · Great Britain  
☎ +44-12-08816062 · 📠 +44-12-08816708  
info@wiska.co.uk · www.wiska.co.uk