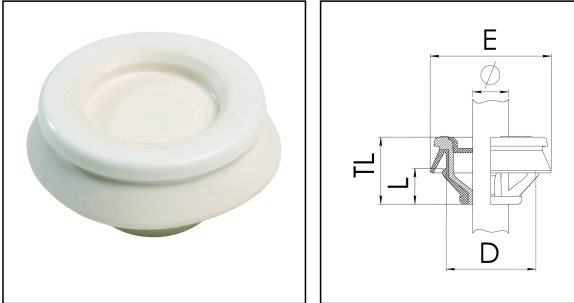


CLIXX® 16 WH

Membrane cable entry with strain relief



Products may differ in size, colour and appearance to those shown. If you require further information or customisation, please contact us directly.



Material	Polypropylene
Material membrane	TPE
Temp. range min	-40 °C
Temp. range max	65 °C
Glow wire test	750 °C
Protection class	IP66 / IP67
Ø Connection thread D	16
Length screw-in thread L	7,3 mm
Ø cable diameter min	4,5 mm
Ø cable diameter max	10 mm
Collar diameter (E)	23 mm - 28 mm
Total length TL	15 mm
Ø Drilling	16,5 mm - 16,7 mm
Wall thickness S	0,8 mm - 3,5 mm
Product Color	RAL 9001
Order no. RAL 9001	10101932
Type	CLIXX® 16 WH
Packing unit	50
EAN number	4007685042246
Tariff number	39269097
ETIM-Classification	EC000451

05.05.2024

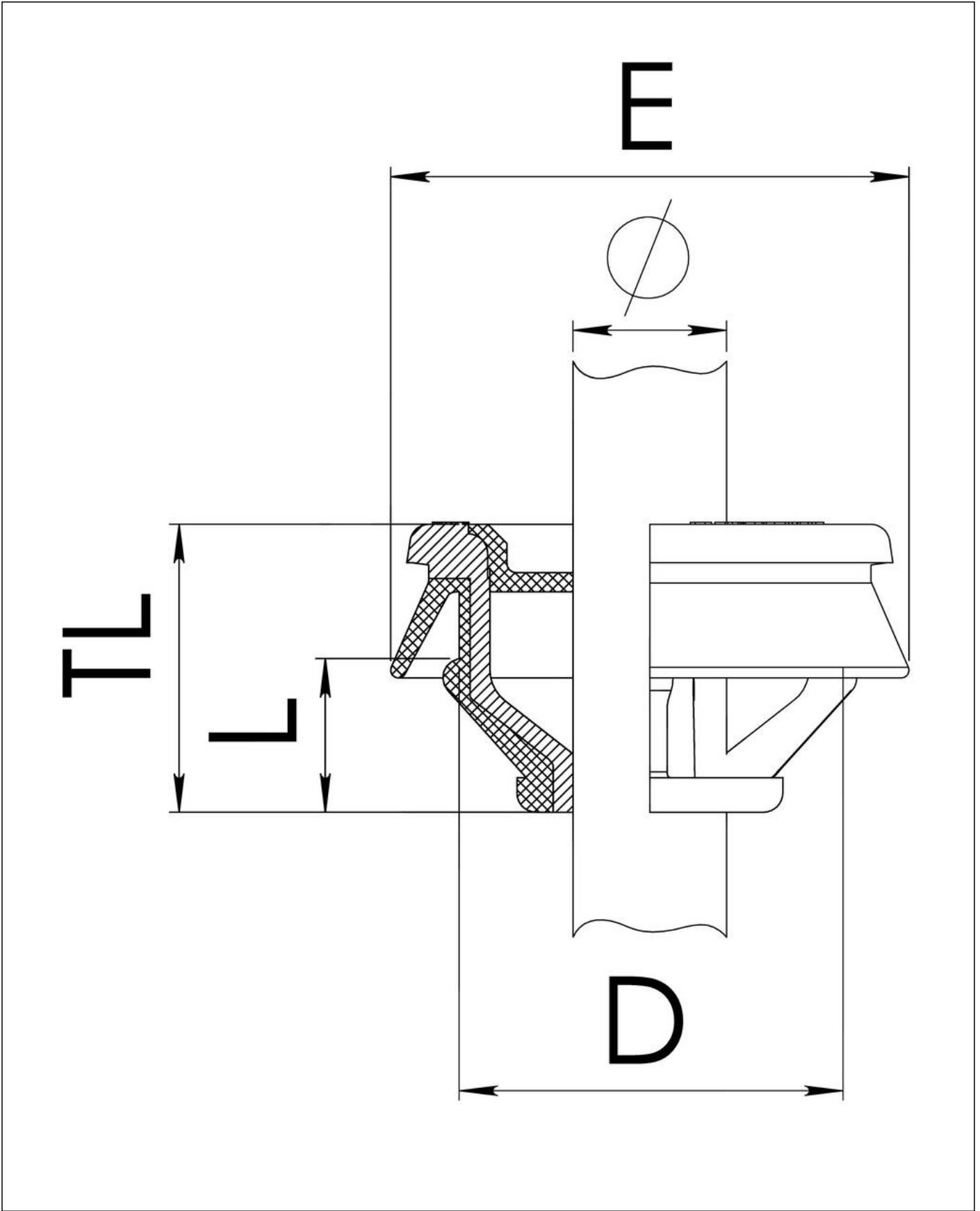
Your Contact:

WISKA UK Ltd.

Unit 7, Hurling Way · St. Columb Major Business Park · TR9 6SX, St. Columb Major, Cornwall · Great Britain

☎ +44-12-08816062 · 📠 +44-12-08816708

info@wiska.co.uk · www.wiska.co.uk



Your Contact:

WISKA UK Ltd.

Unit 7, Hurling Way · St. Columb Major Business Park · TR9 6SX, St. Columb Major, Cornwall · Great Britain

☎ +44-12-08816062 · 📠 +44-12-08816708

info@wiska.co.uk · www.wiska.co.uk