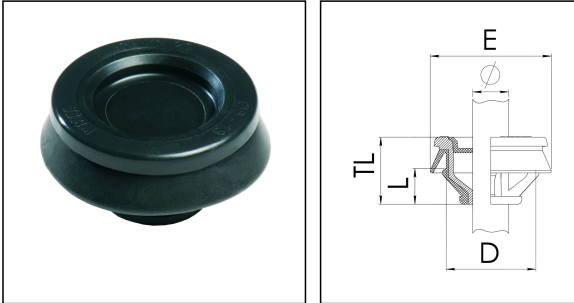


## CLIXX® 25 BK

Membrane cable entrie with strain relief



Products may differ in size, colour and appearance to those shown. If you require further information or customisation, please contact us directly.



<b>Material</b>	Polypropylene
<b>Material membrane</b>	TPE
<b>Temp. range min</b>	-40 °C
<b>Temp. range max</b>	65 °C
<b>Glow wire test</b>	750 °C
<b>Protection class</b>	IP66 / IP67
<b>Ø Connection thread D</b>	25
<b>Length screw-in thread L</b>	7,5 mm
<b>Ø cable diameter min</b>	9 mm
<b>Ø cable diameter max</b>	17 mm
<b>Collar diameter (E)</b>	32 mm - 38 mm
<b>Total length TL</b>	15 mm
<b>Ø Drilling</b>	25,5 mm - 25,7 mm
<b>Wall thickness S</b>	0,8 mm - 3,5 mm
<b>Product Color</b>	RAL 9005
<b>Order no. RAL 9005</b>	10101936
<b>Type</b>	CLIXX® 25 BK
<b>Packing unit</b>	50
<b>EAN number</b>	4007685042321
<b>Tariff number</b>	39269097
<b>ETIM-Classification</b>	EC000451

05.05.2024

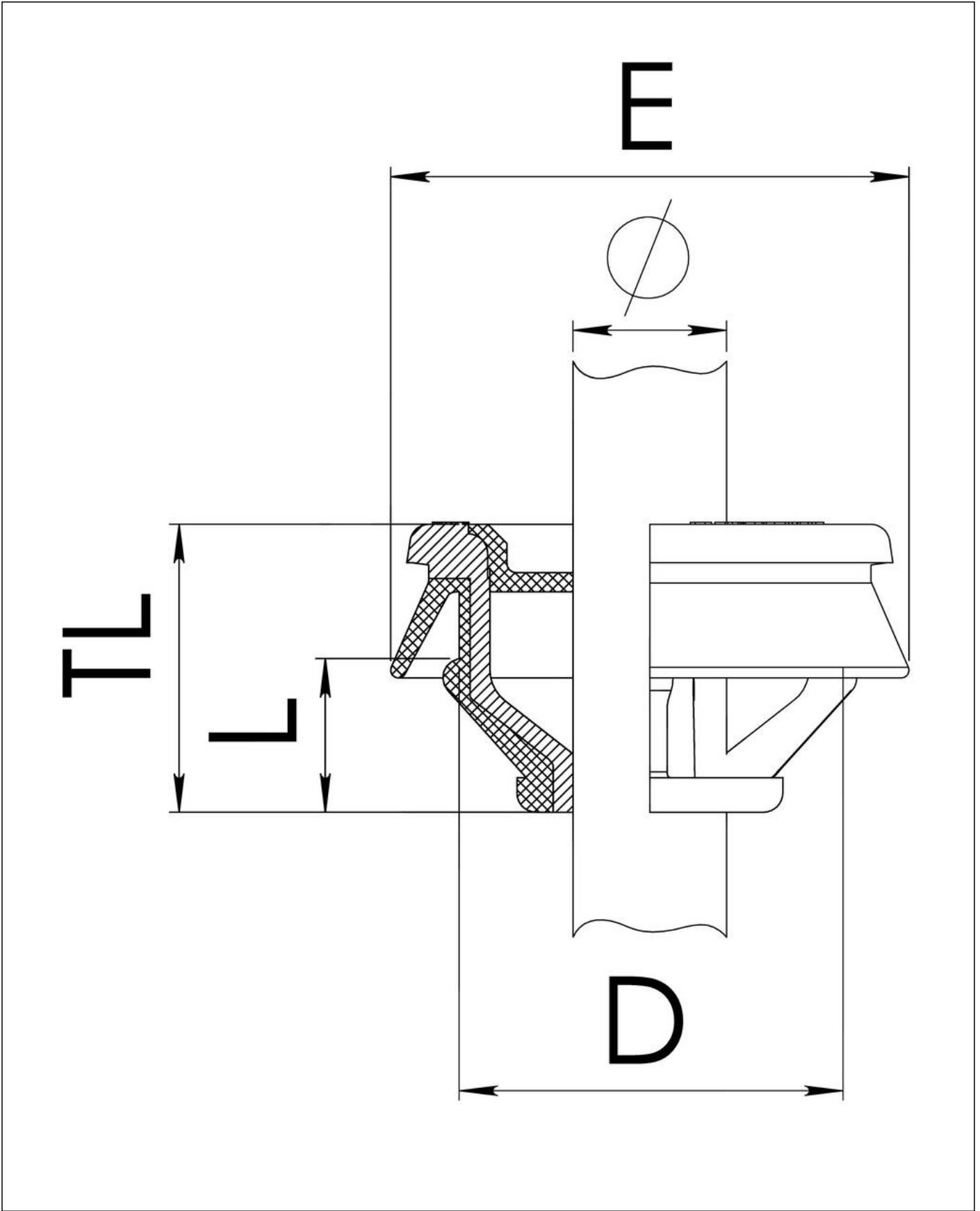
Your Contact:

**WISKA UK Ltd.**

Unit 7, Hurling Way · St. Columb Major Business Park · TR9 6SX, St. Columb Major, Cornwall · Great Britain

☎ +44-12-08816062 · 📠 +44-12-08816708

info@wiska.co.uk · www.wiska.co.uk



Your Contact:

**WISKA UK Ltd.**

Unit 7, Hurling Way · St. Columb Major Business Park · TR9 6SX, St. Columb Major, Cornwall · Great Britain

☎ +44-12-08816062 · 📠 +44-12-08816708

✉ info@wiska.co.uk · 🌐 www.wiska.co.uk