

EMT-F 20 WH

Membrane spout, flame retardant



Products may differ in size, colour and appearance to those shown. If you require further information or customisation, please contact us directly.



Material	TPE, flame-retardant
Temp. range min	-40 °C
Temp. range max	80 °C
Glow wire test	960 °C
Protection class	IP66
Ø Connection thread D	20
Length screw-in thread L	9,5 mm
Ø cable diameter min	1 mm
Ø cable diameter max	13 mm
External diameter ED	25 mm
Total length TL	11 mm
Ø Drilling	20 mm - 21,2 mm
Wall thickness S	2 mm
Product Color	white
Order no. RAL 9001	10063009
Type	EMT-F 20 WH
Packing unit	100
EAN number	4007685630092
Tariff number	39269097
ETIM-Classification	EC000451

17.04.2024

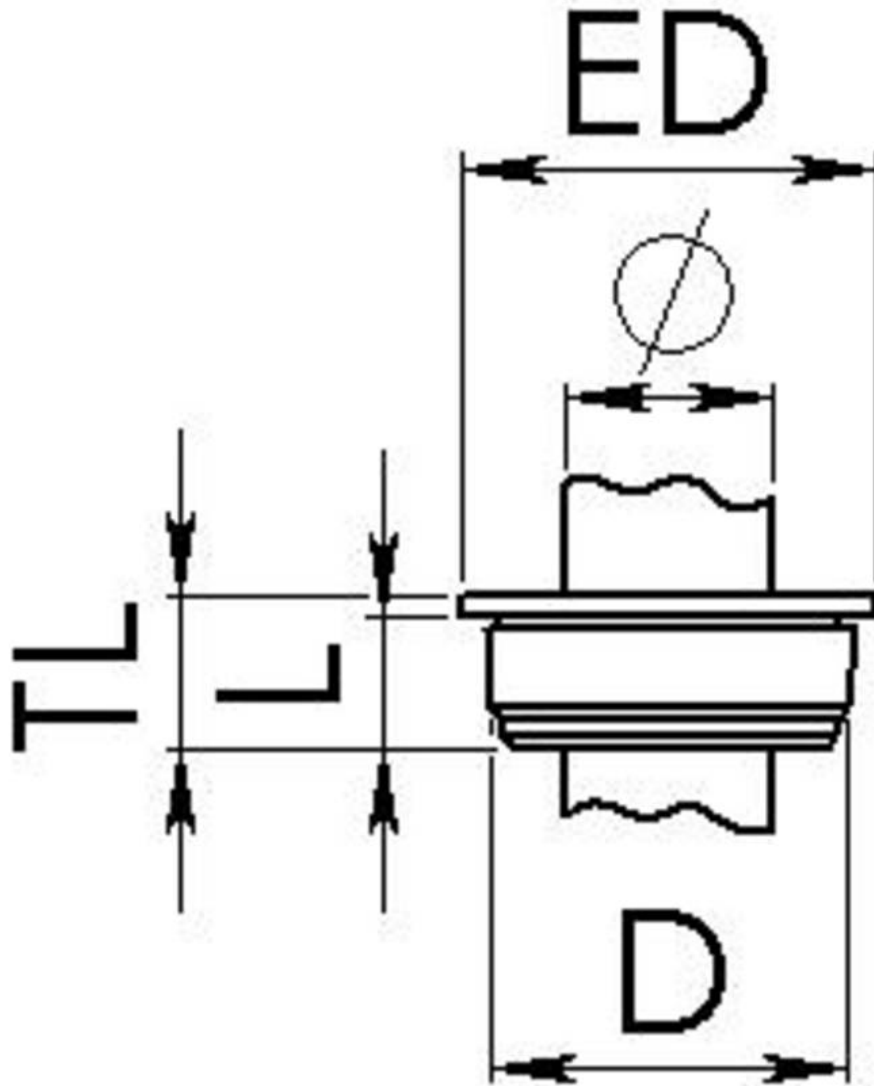
Your Contact:

WISKA UK Ltd.

Unit 7, Hurling Way · St. Columb Major Business Park · TR9 6SX, St. Columb Major, Cornwall · Great Britain

☎ +44-12-08816062 · 📠 +44-12-08816708

info@wiska.co.uk · www.wiska.co.uk



Your Contact:

WISKA UK Ltd.

Unit 7, Hurling Way · St. Columb Major Business Park · TR9 6SX, St. Columb Major, Cornwall · Great Britain

☎ +44-12-08816062 · 📠 +44-12-08816708

info@wiska.co.uk · www.wiska.co.uk